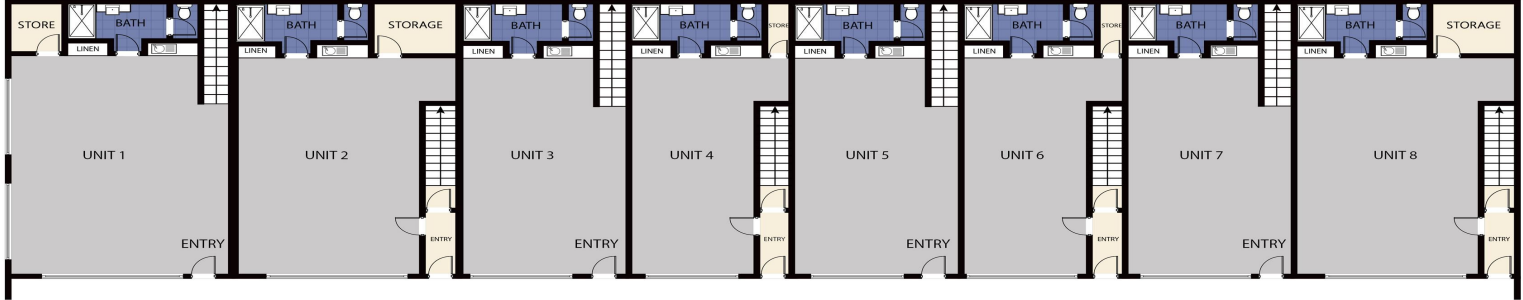


## UPPER FLOOR PLAN



## GROUND FLOOR PLAN



GROUND FLOOR: 115 m<sup>2</sup>  
STORAGE: 35 m<sup>2</sup>  
TOTAL: 150 m<sup>2</sup>

GROUND FLOOR: 109 m<sup>2</sup>  
FIRST FLOOR: 92 m<sup>2</sup>  
TERRACE: 17 m<sup>2</sup>  
TOTAL: 218 m<sup>2</sup>

GROUND FLOOR: 81 m<sup>2</sup>  
STORAGE: 28 m<sup>2</sup>  
TOTAL: 109 m<sup>2</sup>

GROUND FLOOR: 77 m<sup>2</sup>  
FIRST FLOOR: 64 m<sup>2</sup>  
TERRACE: 13 m<sup>2</sup>  
TOTAL: 154 m<sup>2</sup>

GROUND FLOOR: 81 m<sup>2</sup>  
STORAGE: 27 m<sup>2</sup>  
TOTAL: 108 m<sup>2</sup>

GROUND FLOOR: 76 m<sup>2</sup>  
FIRST FLOOR: 63 m<sup>2</sup>  
TERRACE: 12 m<sup>2</sup>  
TOTAL: 151 m<sup>2</sup>

GROUND FLOOR: 81 m<sup>2</sup>  
STORAGE: 27 m<sup>2</sup>  
TOTAL: 108 m<sup>2</sup>

GROUND FLOOR: 106 m<sup>2</sup>  
FIRST FLOOR: 91 m<sup>2</sup>  
TERRACE: 17 m<sup>2</sup>  
TOTAL: 214 m<sup>2</sup>

ARTIST'S IMPRESSION ONLY: While every attempt has been made to ensure the accuracy of this floor plan areas and measurements of doors, windows, rooms and all other items are approximate and no responsibility is taken for any error, omission, or mis-statement. This plan is for illustrative purposes only and should only be used as such by any prospective purchaser. Floor plan by: [www.realestatefloorplans.com.au](http://www.realestatefloorplans.com.au)

## 23 Venture Drive, NOOSAVILLE



## 6/23 Venture Drive, Noosaville QLD 4566

### New Development: Noosaville Industrial Warehouse

Superb opportunity to buy a versatile two-level office/warehouse located within this tightly sought-after Noosaville precinct.

- Ground floor approximately 72m<sup>2</sup>
- First floor caretakers mezzanine approximately 77m<sup>2</sup>
- Versatile premises suitable for a wide variety of uses ? commercial kitchen, wholesalers, distributors, soft industrial manufacturing or storage
- Commercial amenities ? grease traps, kitchenette are available

Industrial  
FOR SALE

149sqm

FordeProperty

**Donna Ingram**

0413 547 914

[donna@fordeproperty.com.au](mailto:donna@fordeproperty.com.au)