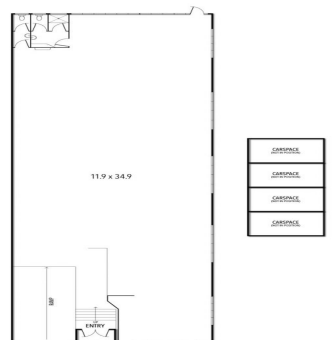




1B/9-12 AIRLIE AVENUE, DANDENONG



11b/6-12 Airlie Avenue, Dandenong VIC 3175

Easily Accessible Industrial

Be quick to secure this easily accessible industrial premise with a host of handy features for your business. Situated in a quiet court with onsite parking, it is close to major roads and offers electric roller door access, bathroom facilities, and a bright clear span warehouse area. Includes 4 onsite car spaces.

- Building area | 415m² approximately
- 3 phase power
- Ample onsite car parking
- Zoning | Industrial 1

Industrial
FOR LEASE

415sqm

Ray White®

Cameron Barber

0431 176 786

cameron.barber@raywhite.com