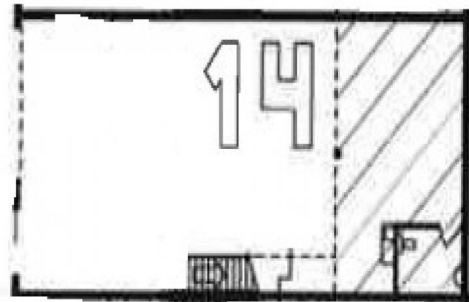
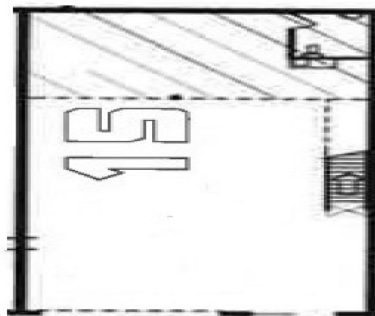




Outlines Indicative Only



214-224 Lahrs Road, Ormeau QLD 4208

Last Remaining Units

Ray White Industrial M1 North is to present to the market the last remaining unit at Ormeau Business Estate, Lahrs Road.

Unit 1 - 5002*

Building/Complex Attributes include:

- * First Floor corporate style mezzanine open plan airconditioned office
- * High clearance tilt panel warehouse
- * Container height roller door access to each warehouse
- * Kitchenette and bathroom amenities
- * NBN - fibre to the Premises (FTTP)*
- * Ample onsite parking

Please contact the exclusive

Industrial
FOR LEASE
Contact Agent
500sqm

Ray White®

Lisa Dunne

0420208891
l.dunne@rwsp.net