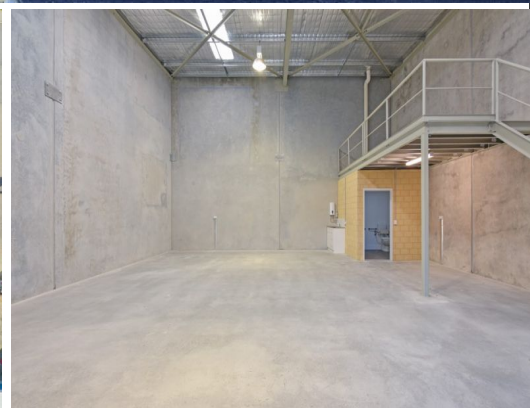
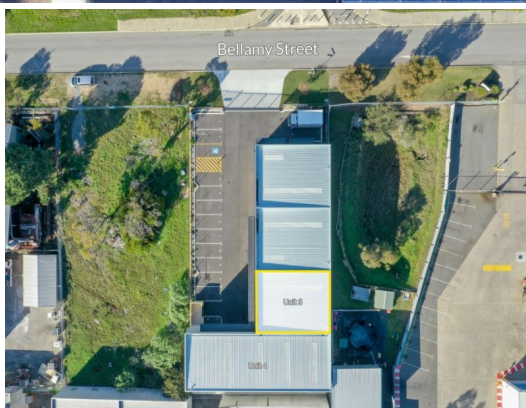




* - Outline is indicative only



3/10 Bellamy Street, O'Connor WA 6163

Quality Factory Unit

This quality factory unit for Lease in O'Connor is one of only 4 units in a fully fenced complex. With only three other tenants in the complex, this property provides you the privacy, convenience, and use of the generous number of common car bays.

Features:

- High Truss Warehouse
- Large motorised Roller Door
- 17sqm* Mezzanine
- 128sqm* Ground Floor Area
- 14 common car bays
- remote access front gate
- 12m wide crossover

Located within the industrial precinct of O'Connor yet still in close proximity to established communities, this property has multiple easy access to main trav

Industrial
FOR LEASE

145sqm

Ray White.

Enrique Reyes

0421 888 688

enrique.reyes@raywhite.com

Josh Sumner

0488 221 331

josh.sumner@raywhite.com