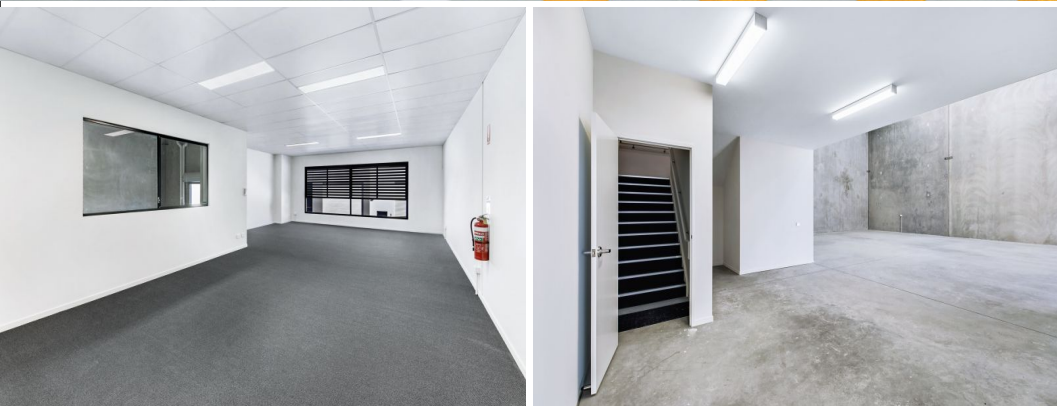




Outlines Indicative Only



8/214-224 Lahrs Road, Ormeau QLD 4208

## 272m2\* Warehouse / Office - Available September 2021

- \* 193m2\* warehouse
- \* 79m2\* mezzanine office
- \* LED Lighting in warehouse & 3 phase power
- \* Allocated car parking including 2 undercover
- \* nbn Fibre to the Premises (FTTP)\*
- \* Available mid September 2021
- \* Call today to arrange an inspection

Industrial  
FOR LEASE

272sqm

\*approx

Please contact the listing agent for more details by clicking on the link above.

Disclaimer:  
Ray White has not indep

# Ray White®

**Lisa Dunne**

0420208891

[l.dunne@rwsp.net](mailto:l.dunne@rwsp.net)