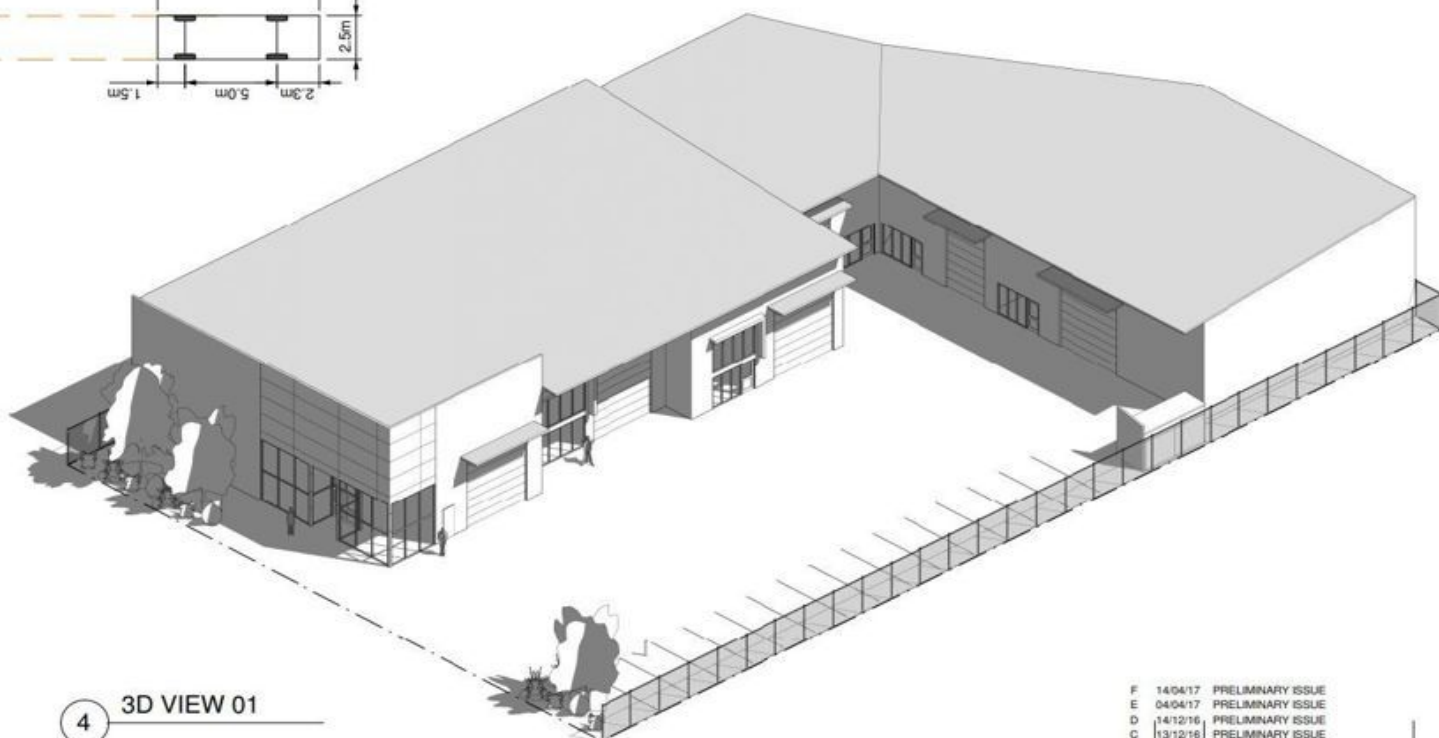
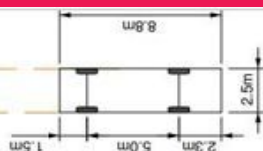


INDUSTRIAL DRIVE



4 3D VIEW 01

F	14/04/17	PRELIMINARY ISSUE
E	04/04/17	PRELIMINARY ISSUE
D	14/12/16	PRELIMINARY ISSUE
C	13/12/16	PRELIMINARY ISSUE
B	12/12/16	PRELIMINARY ISSUE
A	25/07/16	PRELIMINARY ISSUE

revision date details initials check

LOT 104 INDUSTRIAL DRIVE
COFFS HARBOUR NSW 2450



3 PERSPECTIVE 02

1 EAST (STREET) ELEVATION



2 NORTH ELEVATION



1/70 Industrial Drive, North Boambee Valley NSW 2450

NEW TO MARKET.. Just want you've been looking for! Quality - Tilt Panel - Street

New to market - Unit 1 provides prime street front and smart signage exposure for your business.

This quality built complex will contain six, high quality, concrete tilt panel industrial units.

Located in the popular

Industrial
FOR LEASE

221sqm

Cherie Parik

0423 369 999

cherie@yourcps.com.au,a+2605__100613