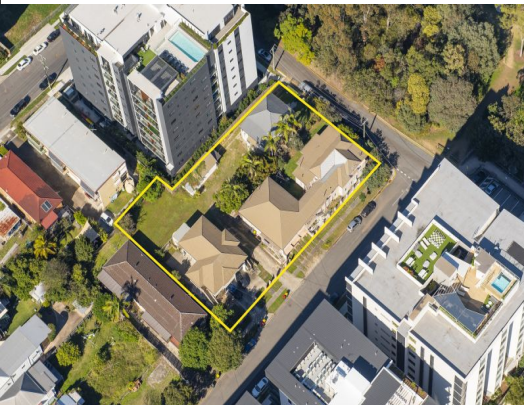




Outlines and Locations Indicative Only



58-62 Lincoln Street And 10 Flora Street, Stones Corner
QLD 4120

Approved Development Site | 108 apartments Stones Corner

- Land area 2,075sqm* on 5 titles
- Located 3.5km* south east of the Brisbane CBD
- Designated High Density Residential Zone under BCC City Plan
- Existing dwellings providing holding income of \$68,940 per annum gross
- Combination of 1, 2, 3 and 4 bed product plus Managers Unit
- Branded "Parc-One" with Approx \$15m in pre-sales undertaken to date
- Directly opposite Hanlon Park and in close proximity to a large range of local shopping, dining and entertainment options in the vibrant Stones Corner precinct
- Close to major public transport and health infrastructure

Development
 FOR SALE



Mark Creevey
 0408992222
 mark.creevey@raywhite.com

Tony Williams
 0411822544
 tony.williams@raywhite.com