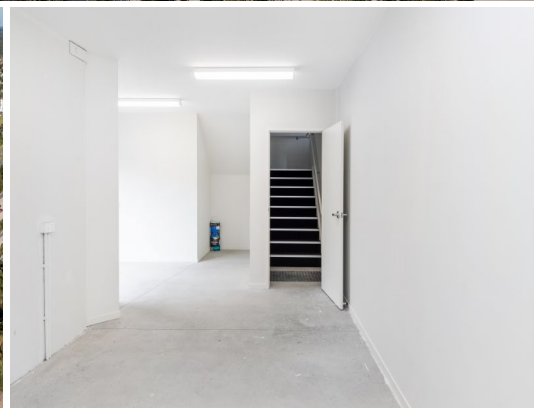




Outlines Indicative Only



9/214-224 Lahrs Road, Ormeau QLD 4208

376m2* Warehouse And Office

- * 282m2* warehouse floor area
- * 94m2* mezzanine open plan air-conditioned office
- * 4 allocated car parks
- * High clearance tilt panel warehouse
- * Container height roller door access to each warehouse
- * Kitchenette and bathroom amenities
- * Fibre to the Premises (FTTP)*
- * Product display areas benefiting from great street exposure
- * Call today to arrange an inspection.

Please contact the exclusive agents for further information or to arrange an inspection on site.

Please contact the list

Industrial
FOR LEASE

376sqm

Ray White®

Lisa Dunne

0420208891

l.dunne@rwsp.net