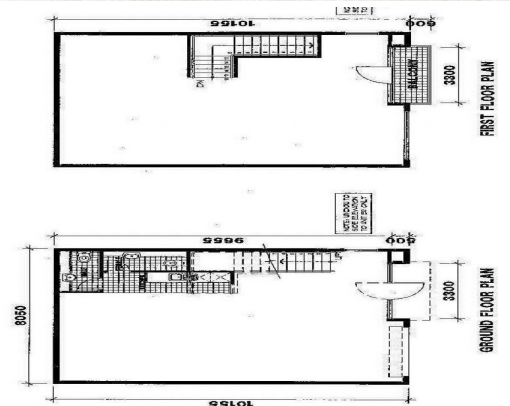
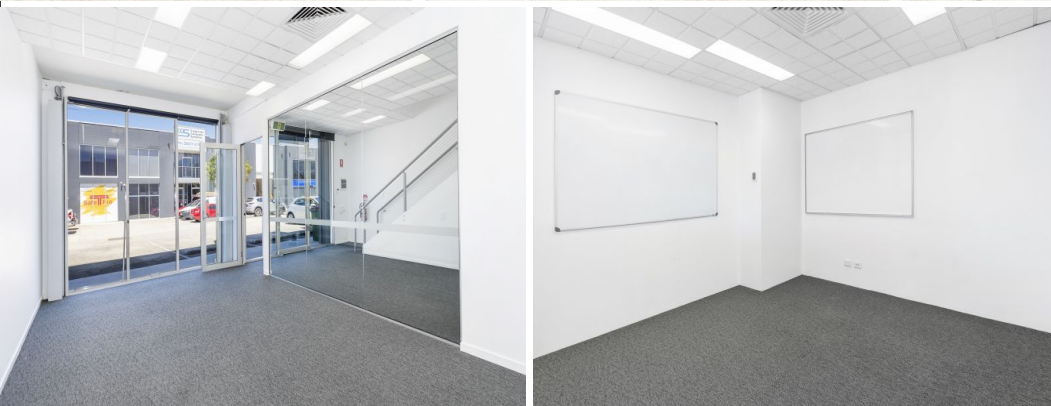




Outlines Indicative Only



33/28 Burnside Road, Ormeau QLD 4208

Professional Office in Industrial Complex

- * 77.94m²* ground floor office
- * 74.36m²* mezzanine office with fitted out offices
- * Boardroom and lunchroom
- * 4 allocated car parks
- * Ducted air-conditioning throughout
- * Available Now

Offices
FOR LEASE

152sqm

*approx

Please contact the exclusive listing agent for more details by clicking on the link above.

Disclaimer:

Ray White has not independently checked any of the information we merely pass on. We make no comment on and give

Ray White®

Lisa Dunne

0420208891

l.dunne@rwsp.net