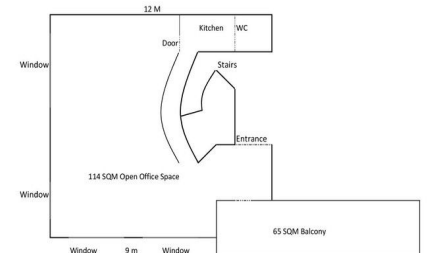




9/438 Forest Road Hurstville NSW 2220



Note: Scale in metres. Indicative only. Dimensions are approximate

9/438 Forest Road, Hurstville NSW 2220

180 SQM SPACE & WALK TO TRAIN STATION

- * 115 SQM first floor office space plus 65 SQM balcony and 3 lock up garages;
- * Less 10 minute walk to Hurstville train station & Westfield;
- * Forest Road exposure and next to "High Point", a new project of 448 residential apartments completed in early 2016;
- * Open plan, nature light with big window, leafy green outlook, and suit variety of retail (e.g. gift shop) or office uses;
- * Air conditioning with internal kitchenette and toilet, and plenty street parkings;
- * Easy access to M5 Motorway entry / exist ramps;
- * Access to swimming pool, tennis court, gym and BBQ area.

Offices
FOR LEASE

180sqm