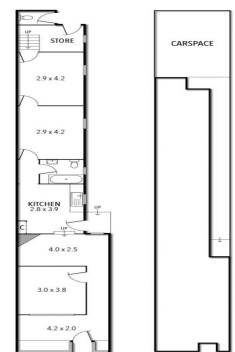


96 CANTERBURY ROAD, CANTERBURY



96 Canterbury Road, Canterbury VIC 3126

Pristine Retail Opportunity - Must Be Leased

Ray White Commercial proudly presents this prime shop front with huge exposure to Canterbury Road.

The property features:

- ? Building area | 92m2 approximately
- ? Rear access and car space
- ? 2 Medical Practitioner Permits
- ? Air conditioning
- ? Recently renovated throughout

This fantastic opportunity will not last long.

Healthcare
FOR LEASE

92sqm

Ray White®

Brett Diston

0439365532

brett.diston@raywhite.com