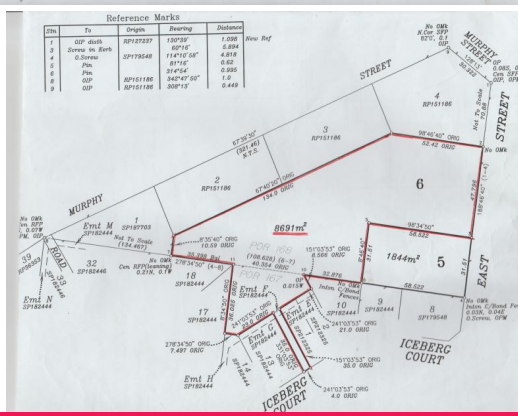
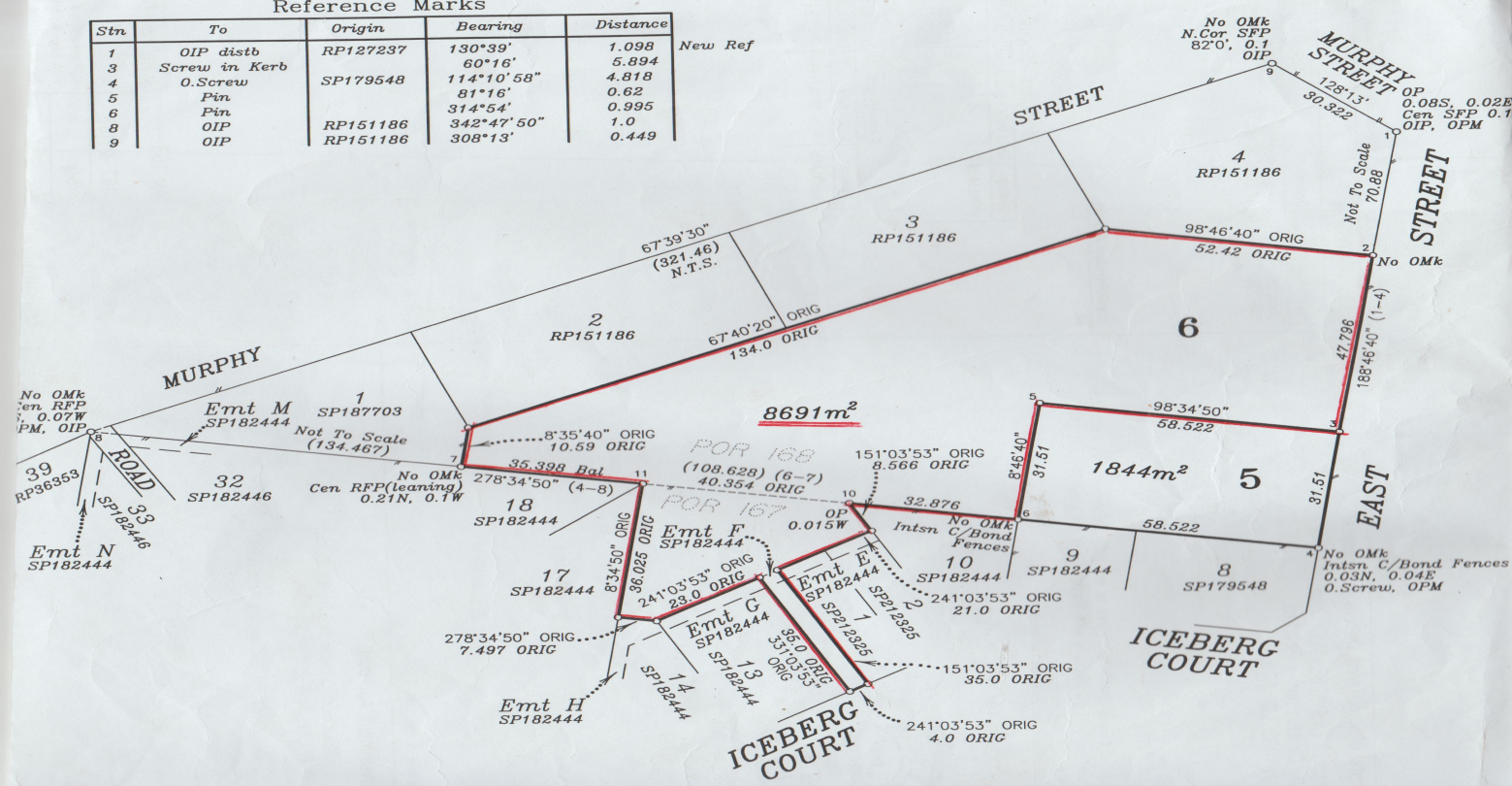


Reference Marks

Stn	To	Origin	Bearing	Distance	New Ref
1	OIP distb	RP127237	130°39'	1.098	
3	Screw in Kerb		60°16'	5.894	
4	O.Screw	SP179548	114°10'58"	4.818	
5	Pin		81°16'	0.62	
6	Pin		314°54'	0.995	
8	OIP	RP151186	342°47'50"	1.0	
9	OIP	RP151186	308°13'	0.449	



67 East Street, Warwick QLD 4370

WARWICK QLD - PRIME DEVELOPMENT SITE

Phone enquiries - please quote property ID 27927.

DEVELOPMENT OPPORTUNITY - An exciting subdivision subject to Council approval - I am offering a prime elevated 8691 m2 (more than 2 acres) of land situated in East Warwick Qld and only 3km from the CBD. Subdivide now or landbank for the future.

An extreme shortage of rental properties, homes or units, in Warwick will greatly increase the viability of this project.

The property adjoins another very successful subdivision.

All services are readily available.

The property has a large number of other possible uses including multiple small-based Air BnB with up to 6 guests each, or a range of Dual occupancy opportunities such as Duplexes, u

Development

FOR SALE

\$480,000

No Agent Property -

1300594794

enquiries@noagentproperty.com.au

QLD