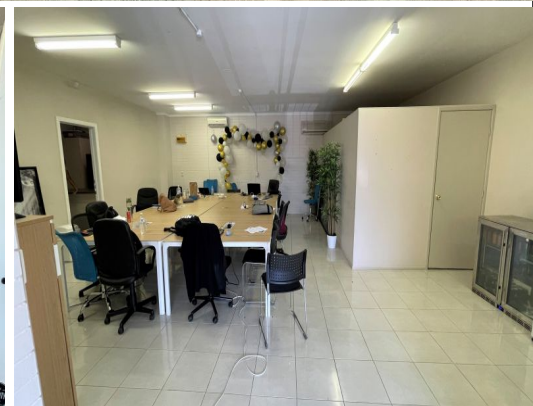
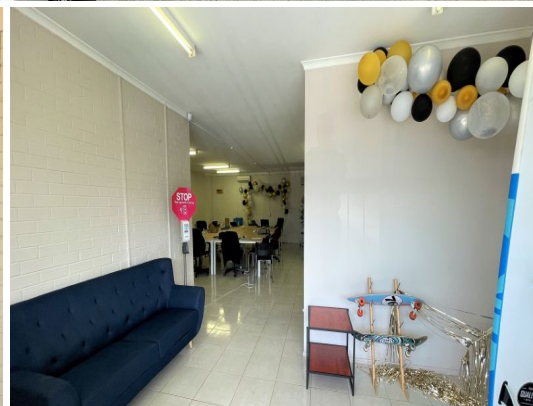


Unit 13



13/67-69 George Street, Beenleigh QLD 4207

Entry Level Tenanted Investment - Commercial Office Suite

- * 82m2* air-conditioned and tiled office suite on 1st floor
- * Leased to a leading organisation in the community services sector.
- * The tenant pays rent + outgoings + GST per month
- * Currently leased from 27/01/2020 until 26/01/2023
- * Open plan area and a kitchenette area
- * Exclusive car parking on-site and free street parking at the front
- * The unit is near the front of the building facing a busy street through Beenleigh
- * Common area male and female toilets downstairs maintained by the Body Corp
- * 2-minute walk from Beenleigh CBD on City Road
- * South and east-facing location, means no hot afternoon sun on the unit

Offices

FOR SALE

82sqm

Please contact the list

Ray White®

Clem Aynsley

0404804123

c.aynsley@rwsp.net