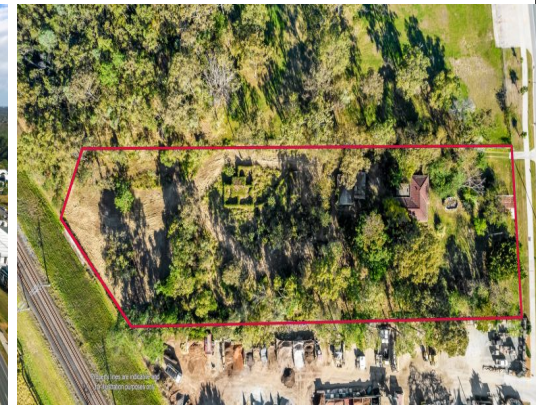
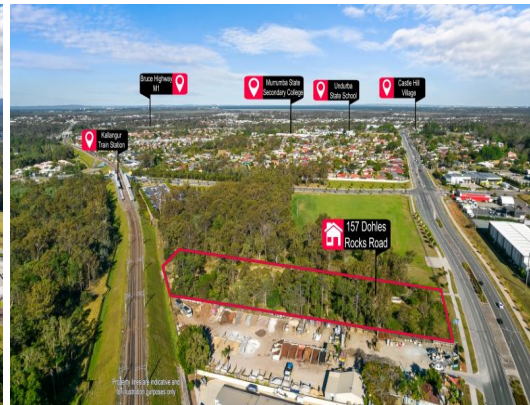




Property lines are indicative and for illustration purposes only



157 Dohles Rocks Road, Murrumba Downs QLD 4503

1.03ha Parcel in Priority Development Area

Ray White Commercial Northern Corridor Group are pleased to offer 157 Dohles Rocks Road, Murrumba Downs for sale.

Development
FOR SALE

Features include:

- Located on the Northside of Brisbane
- Middle of large growth hub
- 1.03 ha of vacant land
- 53.6m Frontage and relatively level contours
- State Priority Development Area known as the Mill PDA
- 700m to Kallangur train Station
- Less than 3 km to the Bruce Highway
- 4.3km to Petrie University

For

Ray White

Aaron Canavan

0447744948

aaron.canavan@raywhite.com

Troy Sturgess

0432701600

troy.sturgess@raywhite.com