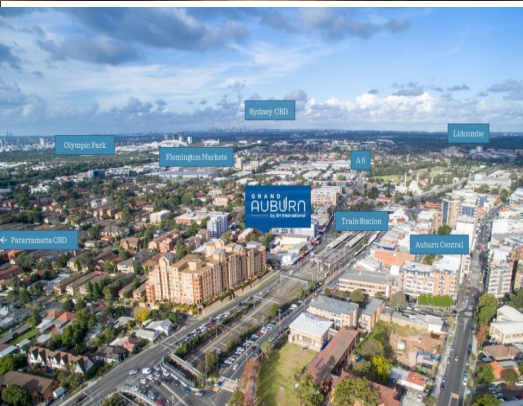


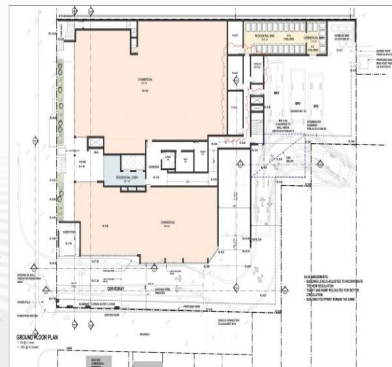


GRAND AUBURN

5-7 Northumberland Road, Auburn
Ground Floor Retail Opportunity



GROUND FLOOR PLAN



Direct access to Tenancy 1
will be available from
loading dock

5-7 Northumberland Road, Auburn NSW 2144

EXCITING NEW RETAIL TENANCIES (300 SQM AND 500 SQM)

Phone enquiries - please quote property ID 28720.

?Site inspections available from mid-June 2022?

Lodge an Expression of Interest to secure one or two exciting new retail tenancies.

- * Areas are approximately 500m² and 300m² (further subdivision is possible).
- * These spaces are available separately or as a joint offering.
- * Indicative rent \$450 - 500/m² p.a. gross

Situated on the ground level of a well located and high quality, mixed-use development and part of three-stage de

Retail
FOR LEASE

800sqm