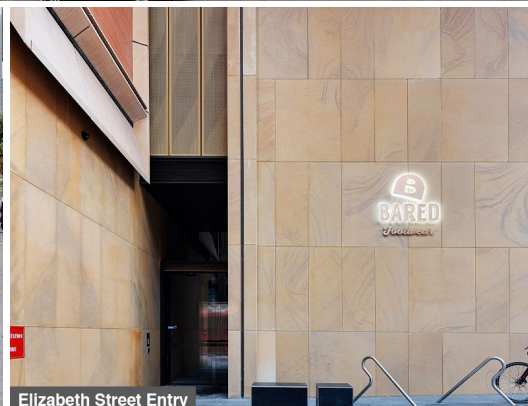
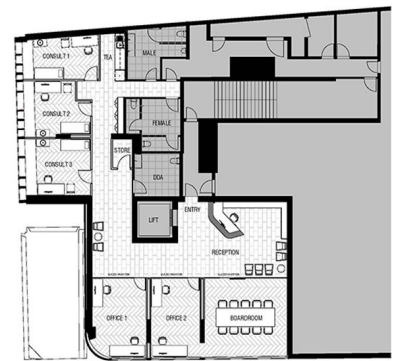


Main Entry



Elizabeth Street Entry



Concept Plans

Level 2/160 King Street, Sydney NSW 2000

Designed by FJMT

Boutique office space in the King and Phillip Building. Designed by renowned architects FJMT exudes luxury and timeless elegance. Grand lobby entrance features sandstone colonnades lined with natural Australian timber.

- Ideal for office, medical, high-end fashion, jeweler
- Own bathrooms DDA, shower, external terrace w/ unique garden bed
- 24 hour 7 days a week access/AC, concierge on site 7 days a week
- Enter via the main lobby or via direct lift access from Elizabeth St
- King Street landscaped garden & views over St James & Hyde Park
- Offered as a cold shell with fit out incentives

Offices
FOR LEASE
\$1,100 sqm pa gross plus GST
235sqm

Ray White

Anthony Harris

aharris@raywhite.com