



2019 Ground/shop 1/84 Mary Street, Surry Hills NSW

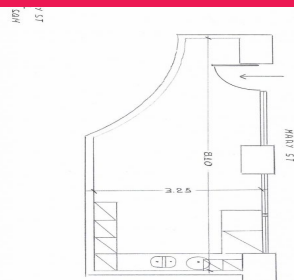
Premium Cafe Shop in Surry Hills For Lease

- * Approx. 23sqm
- * Suitable for take away food, cafe or general retail
- * Great location in Surry Hills with minutes walking from Central Station

84 Mary Street is located between Foveaux and Albion Streets close to Central Station. This heritage property comprises of a six level commercial building constructed in the early 1900's to accommodate the warehouse needed by Tooheys.

Please ring David on 0492 929 791 for inspections or more information.

Retail
FOR LEASE
\$2,600 pm
23sqm



DRAKE
PROPERTY
9283 6280

David Shao

0492 929 791
david@drakeproperty.com