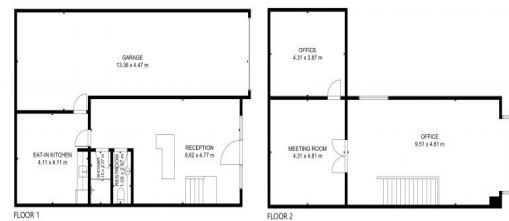




Outlines Indicative Only



INTERNAL AREA 129.70 SQM

18/28 Burnside Rd

## 18/28 Burnside Road, Ormeau QLD 4208

### Committed Seller Offers Vacant Possession Warehouse/Office

Peter Laoudikos of Ray White Commercial is proud to present to the market 18/28 Burnside Road, Ormeau

Offering you the opportunity to purchase and occupy within 30 days, this rare offering will suit investors or owner occupiers alike. Positioned perfectly in a key corridor between Brisbane and the Gold Coast, this modern complex offers 142m<sup>2</sup> GFA of warehouse/office over 2 levels with future scope to add additional office space upstairs.

? Motivated owners provide you this rare opportunity for vacant possession.

? Exclusive use of 3 car spaces

? Corporate style offic

Industrial  
FOR SALE

142sqm