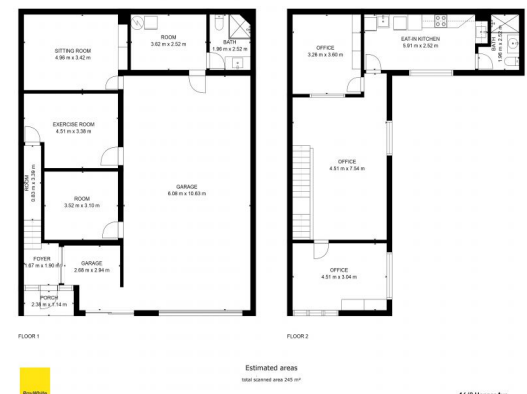




Outlines Indicative Only



16/8 Hopper Ave, Ormeau QLD 4208

## Rare short term lease of 245m2 warehouse/office

Requiring Immediate action for this exceptionally presented property, Peter Laoudikos from Ray White Commercial Gold Coast has exclusive privilege to present this exciting opportunity to acquire a modern industrial and office unit located in the heart of Ormeau's premier industrial estate.

With a short term lease in place, collect rent short term while awaiting access or look to secure a long term lease in the fastest growing key location to Brisbane & the Gold Coasts growth corridor.

Key features of the property includes:

- \* Total area: 245m2
- \* Excellent clearance throughout
- \* Industrial height rol

Industrial  
FOR SALE

245sqm

# Ray White®

**Peter Laoudikos**

0422118288

peter.l@rwsp.net