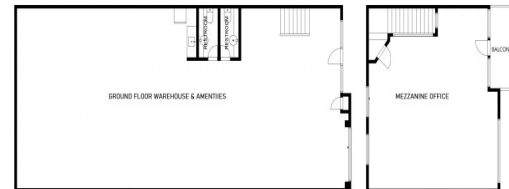
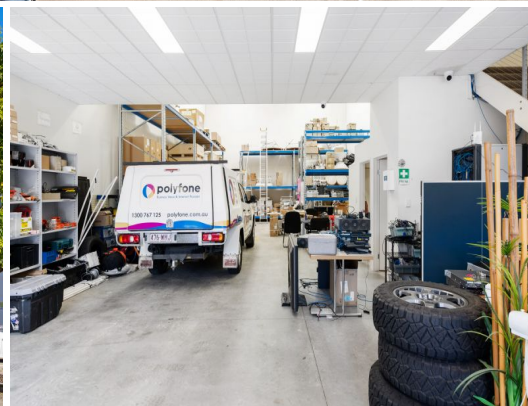




Outlines Indicative Only



Ray White

49/28 Burnside Rd

49/28 Burnside Road, Ormeau QLD 4208

Tenanted Investment

- * 255m²* warehouse long term tenant in place
- * 185m²* warehouse area
- * 70m²* mezzanine office area
- * Manual glass, tilt door
- * Amenities include 2 toilets & kitchenette
- * 4 allocated car parks
- * Tenant in place til November 2022 with 1 year option
- * Ideally located close to M1 Motorway
- * Act now to secure this property

Auction - Thursday 18 August at 11am
Gold Coast Turf Club,
Racecourse Drive, Bundall

Industrial
FOR SALE

255sqm

Ray White®

Lisa Dunne

0420208891

l.dunne@rwsp.net