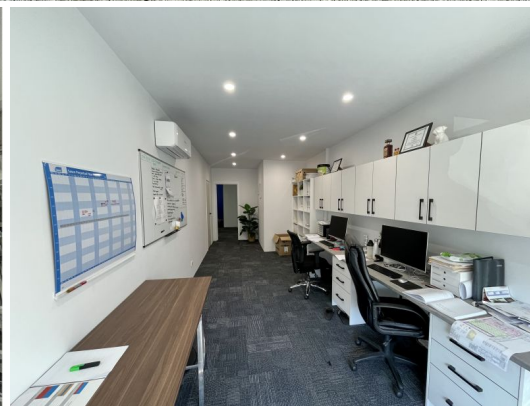
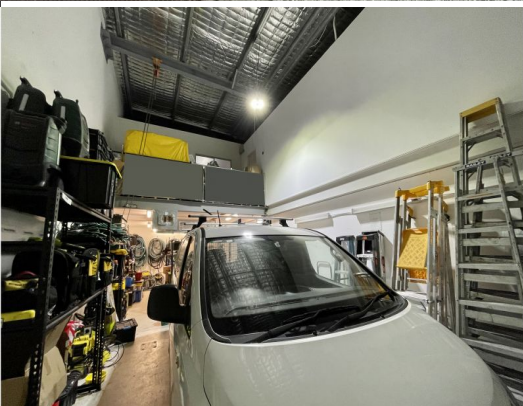




Outlines Indicative Only



2/19 Millennium Circuit, Helensvale QLD 4212

Available October 2022

- * 184m²* total floor area
- * 127m²* floor area
- * 57m²* Mezzanine
- * Warehouse with fitted mezzanine boardroom / offices
- * Forklift access mezzanine storage
- * High clearance automatic roller door
- * 2 x split system air-cons
- * 1km* distance to M1 Motorway entrance / exit
- * Close proximity to Westfield shopping centre & train station
- * NBN fibre to the node
- * 2* Allocated car parks
- * Additional shared complex visitor car parks
- * Kitchenette
- * Onsite shower and toi

Industrial
FOR LEASE

184sqm

Ray White®

Lisa Dunne
0420208891
l.dunne@rwsp.net

James Rafferty
j.rafferty@rwsp.net