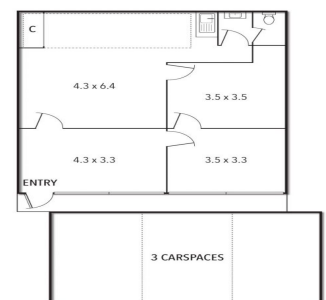


5/653-657 MOUNTAIN HIGHWAY, BAYSWATER



5/653-657 Mountain Highway, Bayswater VIC 3153

## Entry Level Office - Ideal SMSF or Owner Occupier

Ray White Commercial proudly presents this fantastic entry level office in a well established centrally located complex. Easy access from Mountain Highway and close to major Eastern Arterials.

Reception area, three generous office areas and kitchenette/bathroom facilities.

3 allocated onsite car parks, along with onsite visitor car parks, ensures easy parking for staff or clients.

Suits a variety of professional and office uses.

- ? Building area | 77sqm\*
- ? Car parks | 3 onsite
- ? Zoning | Commercial 1
- ? Kitchenette & toilet

Offices  
FOR SALE

77sqm

# Ray White®

**Brett Diston**

0439365532

brett.diston@raywhite.com