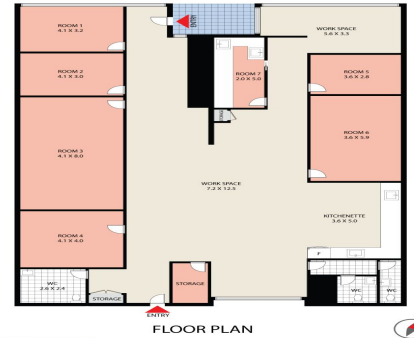


R&W Parramatta 9630 4888



R&W
PARRAMATTA 1 Victoria Road, Parramatta

Ground Floor, 1 Victoria Road, Parramatta NSW 2150

Ground floor retail / office - Victoria Road frontage (Church St Precinct)

- ? 300m2 approx. premium and prime retail / commercial space
- ? Suit variety of occupants including medical related industries and retail
- ? 2 - 3 car spaces at rear
- ? Dual front and rear access points
- ? Disable access and amenities
- ? Adjacent to the new Parramatta Light Rail stop @ Prince Alfred Park stop (near corner of Church St & Victoria Rd)
- ? Well-appointed and presented
- ? Ducted reverse cycle air conditioning
- ? Long lease term available

Healthcare
FOR LEASE

300sqm

Richardson&Wrench
Parramatta

Rocco Ranieri

0412242184
rocco@ranw.com.au