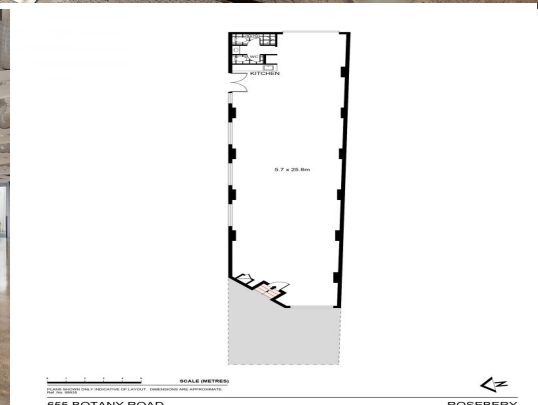
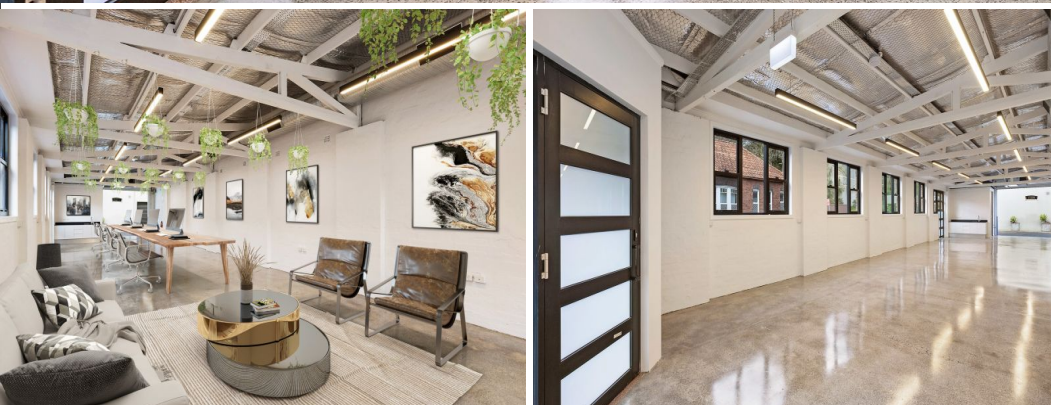




Virtually Furnished



655 Botany Road, Roseberry NSW 2474

Stunning commercial space characterized by an abundance of open space and inspir

- Loft Style 164 sqm occupying a coveted corner position with an expansive frontage on bustling Botany Road and Cressy Street.
- High quality premium finishes including brand new streamlined kitchenette designed with a corian benchtop, freshly polished concrete floors, newly installed aluminium window framing and exposed timber beams and trusses.
- New his and her bathroom with polished chrome Caroma fixtures and shower facilities accentuated by glistening terrazzo cinder tiles
- Access from Emanuel Lane with automatic roller shutter door and loading area
- 2 car parking spaces

Retail
FOR LEASE
\$84,000 plus GST plus Outgoings
164sqm

GUNNING

Tushar Bakshi
0411 888 291
tusharb@gunningre.com.au

Tushar Bakshi
0411 888 291
tusharb@gunningre.com.au