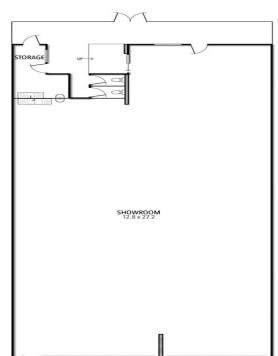




154-156 CANTERBURY ROAD, HEATHMONT



154-156 Canterbury Road, Heathmont VIC 3135

Double Shop Front and Centre

Take advantage of this rare opportunity to grab yourself a large double frontage retail premises from the middle of a rare and renowned evergreen neighborhood shopping precinct.

Easily accessible being close to Heathmont Station and the Eastern Suburbs major arterials including Eastlink, this premises is centrally positioned.

How will you utilize this blank canvas?

It's surrounded by established businesses that offer a wide range of services that attracts a constant flow of patronage, has ample parking on your front door step and also features rear laneway access for deliveries and dispatch.

Zoned Commercial 1, it offers a wide variety of uses (STCA).

Capture the busy Canter

Retail
FOR LEASE

330sqm

Ray White®

Cameron Barber

0431 176 786

cameron.barber@raywhite.com

Brett Diston

0439365532

brett.diston@raywhite.com