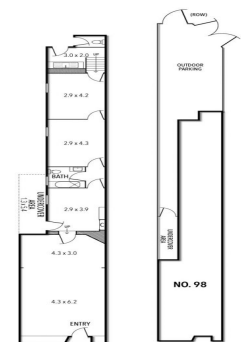


98 CANTERBURY ROAD, CANTERBURY



98 Canterbury Road, Canterbury VIC 3126

Retail/Medical Opportunity On Canterbury

Ray White Commercial is proud to present this prominent freehold shop with great exposure to Canterbury Road.

The property features an open plan retail area flowing into 3 rooms with rear access and parking.

Ideal opportunity for a retail/office business or a specialist medical use STCA.

Property features:

- ? Building area | 89m2 approximately
- ? Zoning | Commercial 1
- ? Rear laneway access
- ? Onsite parking
- ? Clean & well presented
- ? Prominent signage exp

Healthcare
FOR LEASE

89sqm

Ray White®

Brett Diston

0439365532

brett.diston@raywhite.com

Cameron Barber

0431 176 786

cameron.barber@raywhite.com