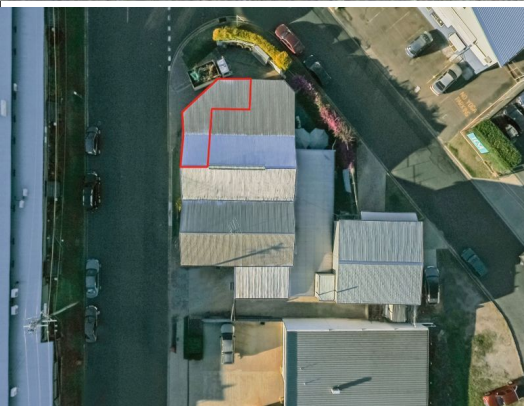




*OUTLINES INDICATIVE ONLY



3/17 Chrome Street, Salisbury QLD 4107

76sqm Warehouse/Office With Easy Access & Great Corner Exposure

- * 76sqm Warehouse/Office.
- * Great road exposure with street corner location.
- * On grade roller door access 4-6m internal height.
- * Front hardstand loading area, allows easy drop off/pick up area.
- * 10sqm approx. internal office space.
- * Internal toilet and kitchenette.
- * Clearspan warehouse area.
- * Situated on popular Chrome Street, just off Evans Road.
- * Contact Exclusive Agent Manoli Nicolas on 0400 082 170 or Tasmin Colquhoun on 0450 827 646 for an inspection today.

Industrial
FOR LEASE

76sqm

LEASE RATE: Contact Age