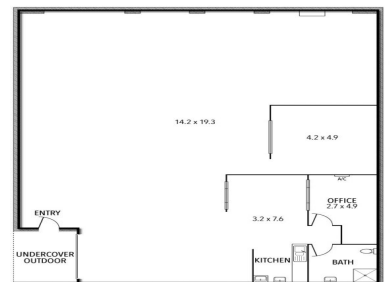


14/167 BEAVERS ROAD, NORTHCOTE



14/167 Beavers Road, Northcote VIC 3070

Former coffee roasting warehouse - open to offers

Invest or Occupy

Ray White Commercial is proud to present this unique warehouse for an astute Investor or Owner Occupier to secure this clear span warehouse of 265sqm approximately, in a prime position in Northcote.

The flexible Commercial 1 Zoning offers the potential of converting the property to a living and working space.

Currently offering a kitchenette, toilet with shower, and wide open warehouse with roller door access.

Features:

- ? 2 office areas, lofty ceiling with access to a pitched ceiling for future mezzanine (STCA) and 3 phase power
- ? Coffee roaster available for sale
- ? 500metre walk to the

Industrial

FOR SALE

265sqm

Ray White®

Brett Diston

0439365532

brett.diston@raywhite.com