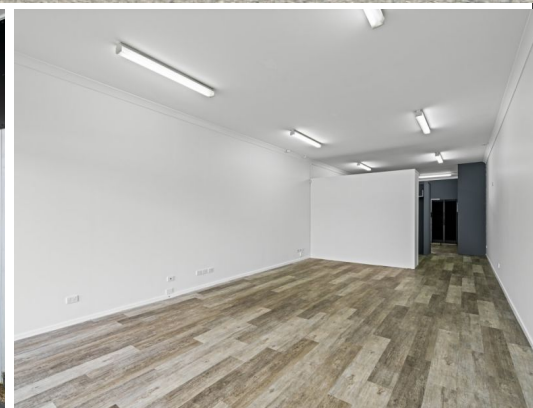
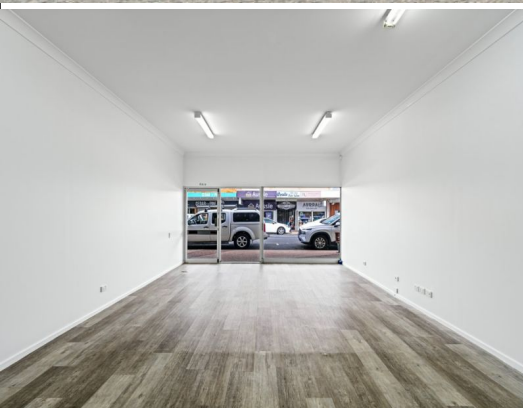




*outline indicative only



Shop 2/138 Bay Terrace, Wynnum QLD 4178

70sqm Prime Retail Shop/Office. Rear Car Park.

Rarely available 70sqm Ground Floor Shop in the heart of Bay Terrace.

- * Ground floor shop, multiple suitable uses. Front and rear access.
- * Clean and tidy internally. Ready to go.
- * Vinyl flooring, rear kitchen/lunchroom area.
- * 4 exclusive car spaces onsite at rear.
- * Well exposed site with signage opportunities on shopfront and awning.
- * Deal to be done.
- * Contact Exclusive Agents Manoli Nicolas 0400 082 170 or Tasmin Colquhoun 0450 827 646 for an inspection today.

PRICE: \$30,000 Gross + GST

LAND AREA: 70 sqm

Retail

FOR LEASE

42sqm