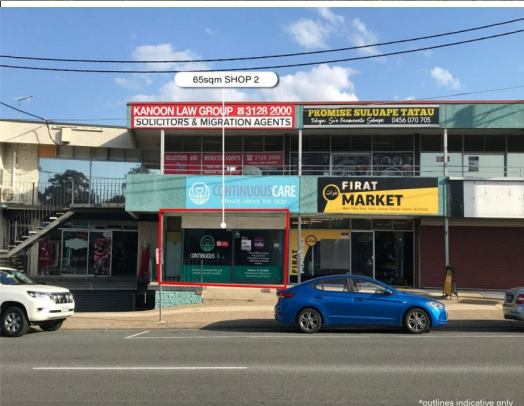




*outlines indicative only



*outlines indicative only



*outlines indicative only



1-3 Noel Street, Slacks Creek QLD 4127

60, 64 & 65sqm Prime Exposure, Corner Of Kingston Rd

A great opportunity to secure affordable high exposure space for your business. Busy Kingston Road. Great visibility to thousands of passing cars. Choice of 2 tenancies available.

- * Shop 2: Ground floor, 65sqm open plan layout
- * Shop 7: First Floor, 60sqm office space
- * Shop 9: First floor, 64sqm open plan layout
- * Excellent signage opportunities
- * Air-conditioned
- * Vibrant area with a great mix of businesses
- * Easy public transport access
- * Ample parking in Noel Street

LEASE RATE: From \$14,00

Offices
FOR LEASE
From \$14,000 p.a. + GST (incl outgoings)