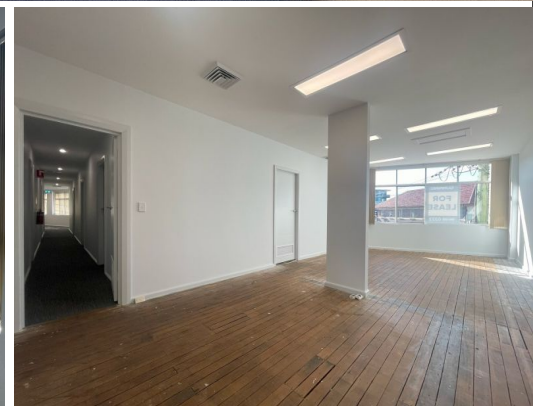
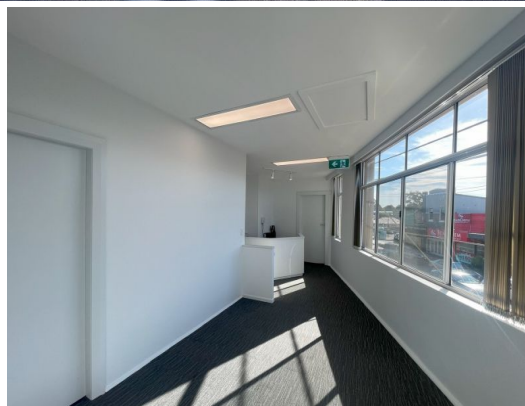


*Outline Indicative Only



Level 1/1/446-450 Forest Road, Bexley NSW 2207

RECENTLY REFURBISHED, LIGHT & BRIGHT TOP FLOOR OFFICE SPACE WITH LOADS OF SIGNAG

Gunning Real Estate is pleased to present this well positioned, light and bright office space. Besides boasting excellent natural light, the property also benefits from prominent signage exposure, both at ground level and above the awning.

Offices
FOR LEASE

220sqm

KEY FEATURES

- Area: 220sqm*
- Excellent natural light
- Strong signage exposure
- Recently refurbished

GUNNING

James McKenny

0423 048 814

jamesm@gunningre.com.au