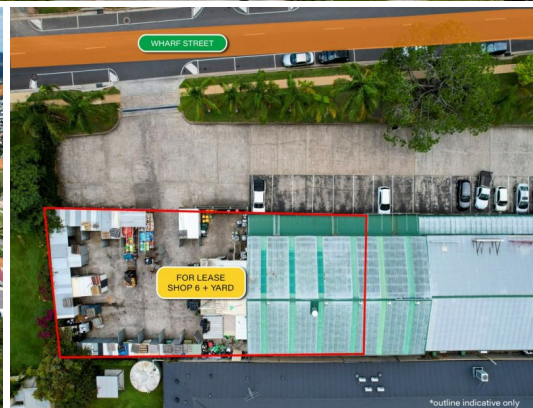




\*outline indicative only



**6/2-12 Wharf St, Logan Village QLD 4207**

## 249sqm Retail + 550sqm Exclusive Courtyard/Car Park, CENTRAL LOGAN VILLAGE

- \* 249sqm Bulk Goods Retail
- \* 550sqm Exclusive Use Paved Yard
- \* Off Albert Street, Opposite Bakery
- \* Loads of onsite Parking
- \* Woolworths & McDonalds close by
- \* Yarrabilba 5mins; Brisbane 40mins

LEASE RATE: Contact Exclusive Agent  
 AVAILABLE SPACE: 249 sqm  
 FREE EXCLUSIVE AREA: 550 sqm

Logan Village is locate

Retail  
 FOR LEASE  
 Contact Exclusive Agent  
 249sqm