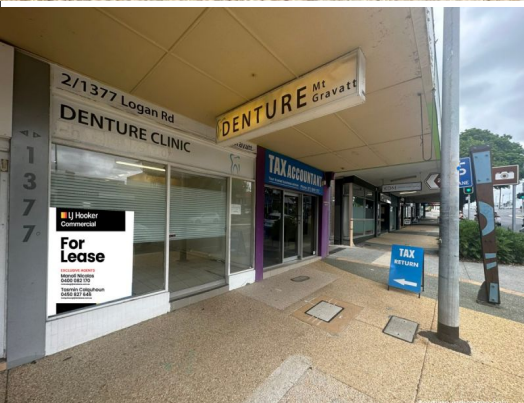


Outline indicative only



2/1377 Logan Road, Mount Gravatt QLD 4122

64sqm Main Road Shop. Rear Car Park.

- * 64sqm Basic Main Road Shop.
- * Front & Rear Access.
- * Deal to be done.
- * Excellent Main Road exposure.
- * Contact Agent Manoli Nicolas on 0400 082 170 for an inspection today.

Retail
FOR LEASE

64sqm

LEASE RATE: \$18,000 Gross + GST
AVAILABLE SPACE: 64 sqm

Location

The suburb is only 10kms southeast of the Brisbane GPO and is positioned between Logan Road and the South-East Freeway. This is one of Brisbane's best established commercial office and retail precincts. The area offers excellent business exposure and access to all Motorway's and is considered

Manoli Nicolas

0400 082 170

mnicolos@ljhbrisbane.com.au