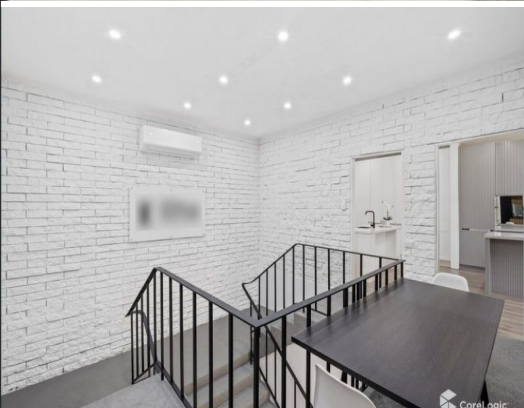




CoreLogic



Unit 15 8-10 Britton St, Smithfield

Disclaimer: Floor plans and site plans are intended as a guide only. They are not part of any legal document or title and are subject to errors, omissions, and changes without notice.

15/8-10 Britton Street, Smithfield NSW 2164

CALLING ALL INVESTORS FOR GOLD OPPORTUNITY

Great location with access to major arterial roads, is this wide street facing warehouse with office/showroom and ample car parking set in small complex.

- Total area; 465 Sqm approx
- All renovated
- Refurbished office/showroom over two levels
- Excellent internal clearance
- Roller door access with excellent truck access
- 3 Cool rooms
- 3 phase power
- Male and female amenities
- 8 allocated car parking spaces
- Close proximity to ma

Industrial
FOR SALE
Contact Agent
465sqm

Helene Ly

0411 154 888

helene.ly@khoandlee.com.au