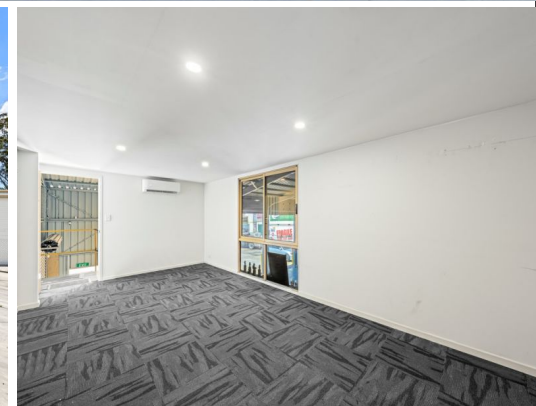




*outline indicative only



13 Industrial Avenue, Logan Village QLD 4207

NEW 3 Year Lease Until 7/01/27 Industrial Investment

- * Rental return of \$99,000 p.a. Nett
- * Annual increases of 3% or CPI (whichever is greater)
- * Solid Tenant in both Sydney & Newcastle as well
- * Electric solid entry gate to raised large concrete laydown/hardstand area
- * 282sqm building on 1,518sqm land
- * 4 Electric roller door bays (each 3m wide x 4.3m high) plus 2 side awning areas plus 1 side roller doors
- * 3 Phase power plus 5.5 kw of solar & NBN
- * Small office and kitchen
- * Shower & 2 separate toilets
- * Growth area, located in Logan City Council

Industrial

FOR SALE

Contact Exclusive Agent Bruce Webster

282sqm

AVAILABLE SPACE: 282 sqm

Bruce Webster

0408 551 858

bwebster@ljhbrisbane.com.au