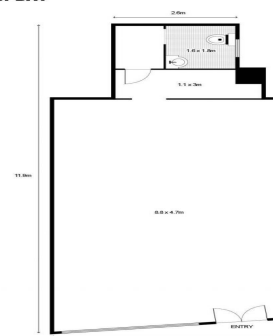




35 Elizabeth Bay Road,  
ELIZABETH BAY



## 35 Elizabeth Bay Road, Elizabeth Bay NSW 2011

### STYLISH RETAIL SHOP/SHOWROOM IN ELIZABETH BAY

Strategically located between Potts Point and Elizabeth Bay Residential precinct, this Iconic Shop presents a fantastic opportunity to an established operator or destination concept:

- 55sqm on street level (approx 12m x 4.7m)
- 5m of Street exposure
- Storage and Toilet at the back
- Close proximity to busy Macleay St, Gazebo and other local popular shops
- Suitable for a wide range of uses (subject to council approval)

For more information or to inspect, please contact the Agent.

Retail  
FOR LEASE

55sqm

# GUNNING

**Tushar Bakshi**

0411 888 291

tusharb@gunningre.com.au

**Tushar Bakshi**

0411 888 291

tusharb@gunningre.com.au