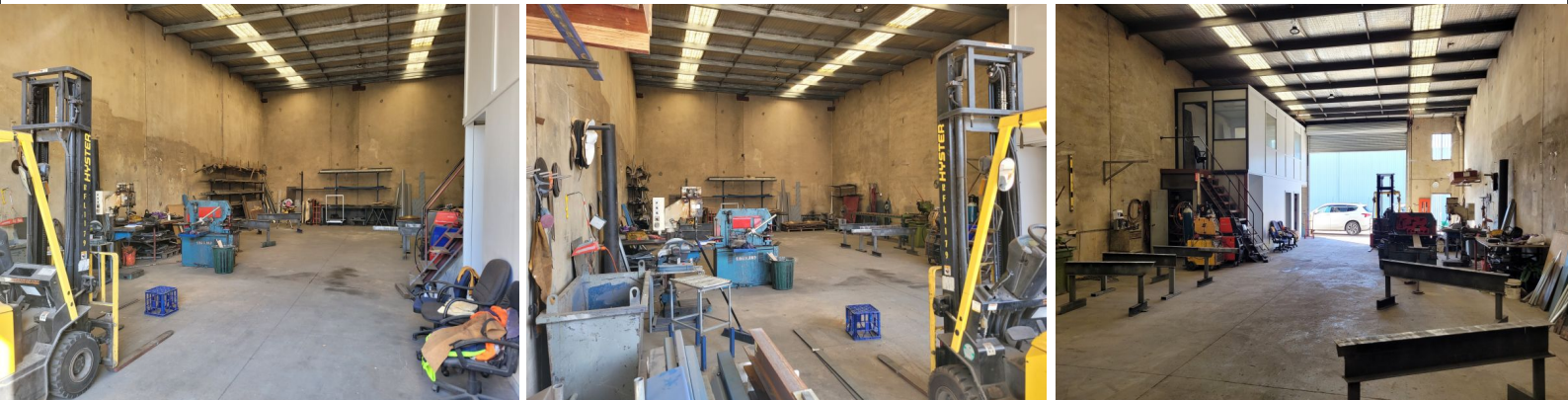




Boundary Indicative Only



## Unit 3/6 York Road, Ingleburn NSW 2565

### Superb Industrial Unit on York Road

This exceptional industrial unit is ideally located on York Road, just off Aero Road and provides excellent access to the M5 & M7 Motorways via the Brooks Road on ramp. Within easy walking distance to the Ingleburn CBD & Railway station.

- ? Functional industrial unit totalling 217m?
- ? Located in a small complex of 6 only
- ? Full height concrete panel construction
- ? 6.5 metre plus internal clearances
- ? Container height roller shutter door access
- ? Excellent truck & vehicle accessibility with wide driveway
- ? Ample parking
- ? Available mid July 2024

For more information please conta

Industrial

FOR LEASE

Contact Agents For Lease Pricing  
217sqm