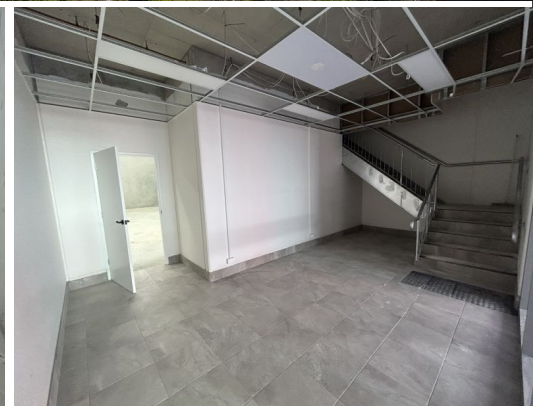
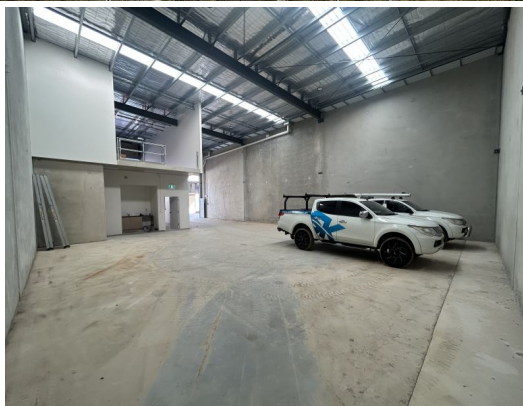




Boundary Indicative Only



Unit 20/42-46 Turner Road, Smeaton Grange NSW 2567

Brand New Industrial Unit | Ideal for Owner Occupiers and Investors Alike

Unit 20, 42-46 Turner Road, Smeaton Grange is situated in the heart of the Smeaton Grange industrial precinct in close proximity to Camden Valley Way, Narellan Road and the Hume Highway providing connectivity to the M5 and M7 Motorways and all greater Sydney road networks.

- ? Brand new industrial unit of 362m?*
- ? Full height concrete panel construction
- ? High clearance with electric roller shutter door
- ? Mezzanine office space or storage
- ? Kitchenette and amenities
- ? Excellent truck and vehicle access
- ? One of the last oppor

Industrial
FOR SALE
Auction
362sqm