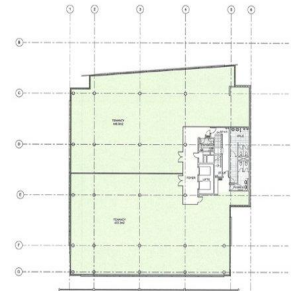
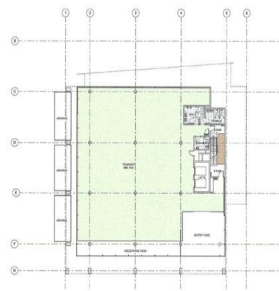


Room	Area (sqm)
Office	466
Mezzanine	627
First Floor	945
Second Floor	945
Third Floor	890
Total	3873



GROUND FLOOR PLAN
DESIGN RESPONSE REPORT - BLOCK 5 SECTION 54 KINGSTON

COX

MEZZANINE FLOOR PLAN
DESIGN RESPONSE REPORT - BLOCK 5 SECTION 54 KINGSTON

COX

FIRST FLOOR PLAN
DESIGN RESPONSE REPORT - BLOCK 5 SECTION 54 KINGSTON

COX

53 Wentworth Avenue, Kingston ACT 2604

KINGSTON FORESHORE IS COMING ALIVE!

This new commercial building will consist of two basement levels of carparks with showers and spaces for bikes. Ground and four upper levels of commercial office space including a double volume colonnade frontage to Wentworth Avenue. The building will offer great lakeviews and is in close proximity to Kingston shopping centre. The building also includes a mezzanine level with lift access and large balcony on the upper level.

- Ground: 466sqm approx
- Mezzanine: 627sqm approx
- First Floor: 945sqm approx
- Second Floor: 945sqm approx
- Third Floor: 890sqm approx

Lease Type: Direct Leas

Offices
FOR LEASE

4000sqm



Nicola Cooper

+61 423 773 479

nicola.cooper@au.knightfrank.com